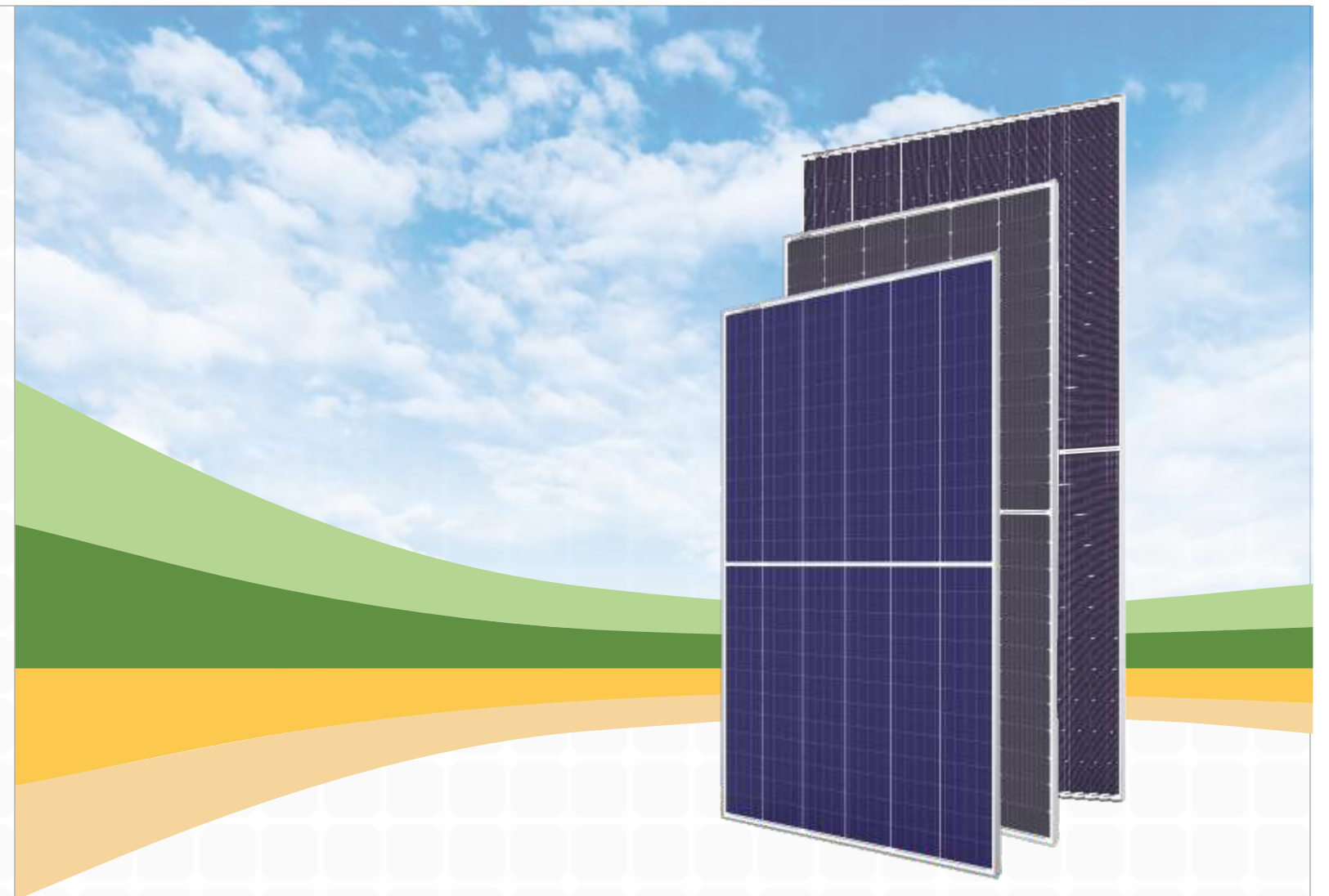




**CREDESCENCE SOLAR PANELS PRIVATE LIMITED**

Plot No.: 18 & 19, Survey No.: 142/2, Rajkot-Jamnagar  
Highway, Padadhari, Rajkot, Gujarat, India- 360110

🌐 [www.credencesolar.com](http://www.credencesolar.com) | ✉ [info@credencesolar.com](mailto:info@credencesolar.com)



Experience Power It's Peak  
**MOST POWERFUL &  
MODERN MANUFACTURER**

Higher Efficiency Solar PV Modules Manufacturer

📞 +91 9033072969 | ✉ [info@credencesolar.com](mailto:info@credencesolar.com) | 🌐 [www.credencesolar.com](http://www.credencesolar.com)

## ABOUT US:

Credence Solar: As a Solar PV Modules manufacturer our commitment is simple: High-power Solar energy that is reliable and efficient. Our main priorities are Performance and reliability.

We are on a mission: To build a sustainable future, to fight the climate change and to reduce the carbon footprint. We want to shift the future into a better world and we want to show you how you can be a part of this mission. Join us in a journey to change the world.

We've only just begun & soon you'll find us Chasing The Sun..!

To achieve what we have dreamt our modules are manufactured under one of the top class latest & most advanced state of art manufacturing facility with fully automatic line and having the latest testing facility located in Rajkot , Gujarat , India.

## VISION:

To Contribute with the utmost products & Services to reduce the Carbon footprint and make Country Energy Efficient in the field of Renewable Energy Revolution.

## MISSION:

To contribute in the field of Renewable Energy Sector by producing high efficiency solar PV products and components to meet global standards and requirements with premium quality.

## PRODUCTS:

Quasar Bi- High Efficiency Half Cut Mono PERC Bifacial Module with 210mm

Quasar- High Efficiency Half Cut Mono PERC Module with 210mm

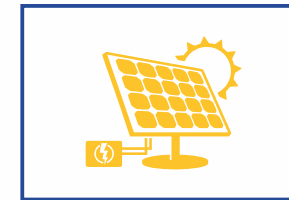
Hyper Nova- High Efficiency Half Cut Mono PERC Module with 182mm

Super Nova- High Efficiency Half Cut Poly Module

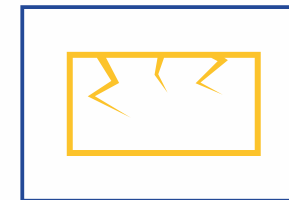
## FEATURES



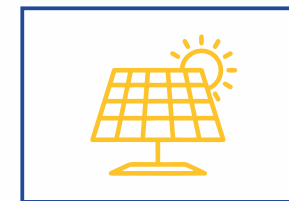
**Higher Efficiency**  
(Modules Made with Round Ribbon)



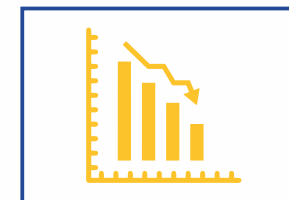
**Higher Efficiency**  
(Cell to Cell gap is minimal)



**Lower Micro Crack Risk**  
(Better Product Reliability by NDC cutting)



**Higher String Power**  
(Low Voltage and High Current Modules)



**Lower LCOE**  
(Lesser BOS cost)



**3 Stage EL Inspection**  
(String Level EL inspection)



**Better Mechanical Rigidity**  
(Reinforced Rib for Back Support\*)



**1500VDC System**  
(Higher Modules in Series)

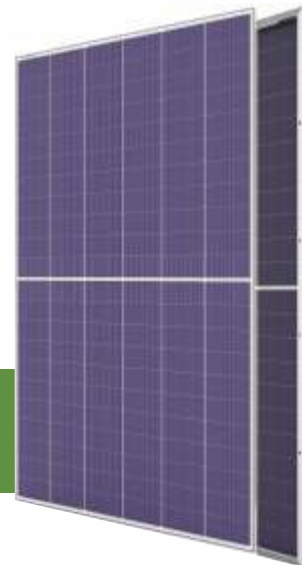


# MODULE RANGE

## Quasar-Bi

### High Efficiency Half Cut Mono PERC Bifacial Modules

Model Size : 2384 x 1303 x 35 mm  
Efficiency : > 22.50%\*  
Design Configuration : Glass to Glass with Frame  
Cell Type : 210 mm - 12 BB Bifacial - 132 Cut Cells

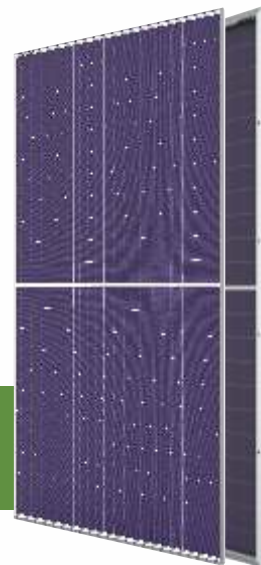


700+WP

## Quasar-Bi

### High Efficiency Half Cut Mono PERC Bifacial Modules

Model Size : 2384 x 1096 x 35 mm  
Efficiency : > 22.50%\*  
Design Configuration : Glass to Glass with Frame  
Cell Type : 210 mm - 12 BB Bifacial - 110 Cut Cells

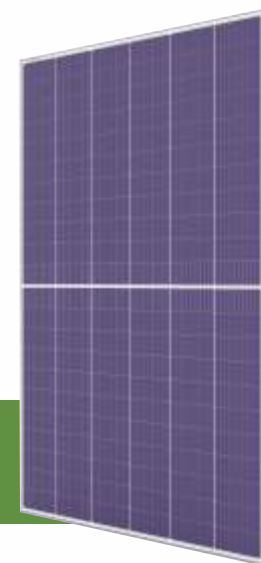


590+WP

## Quasar

### High Efficiency Half Cut Mono PERC Modules

Model Size : 2384 x 1303 x 35 mm  
Efficiency : > 21.00%  
Design Configuration : Glass to Back sheet with Frame  
Cell Type : 210 mm - 12 BB Bifacial - 132 Cut Cells

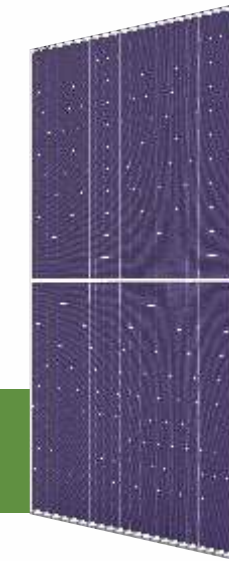


650+WP

## Quasar

### High Efficiency Half Cut Mono PERC Modules

Model Size : 2384 x 1096 x 35 mm  
Efficiency : > 20.50%  
Design Configuration : Glass to Back sheet with Frame  
Cell Type : 210 mm - 12 BB Bifacial - 110 Cut Cells

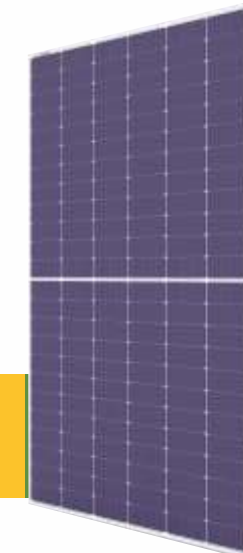


540+WP

## Hyper Nova

### High Efficiency Half Cut Mono PERC Modules

Model Size : 2261 x 1134 x 35 mm  
Efficiency : > 21.00%  
Design Configuration : Glass to Back sheet with Frame  
Cell Type : 182 mm - 10 BB Bifacial - 144 Cut Cells

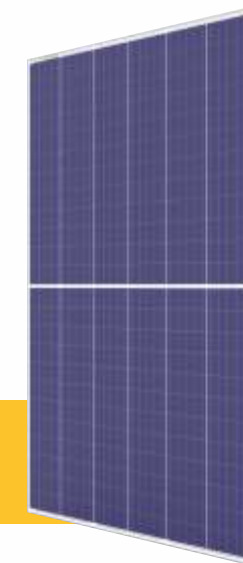


540+WP

## Super Nova

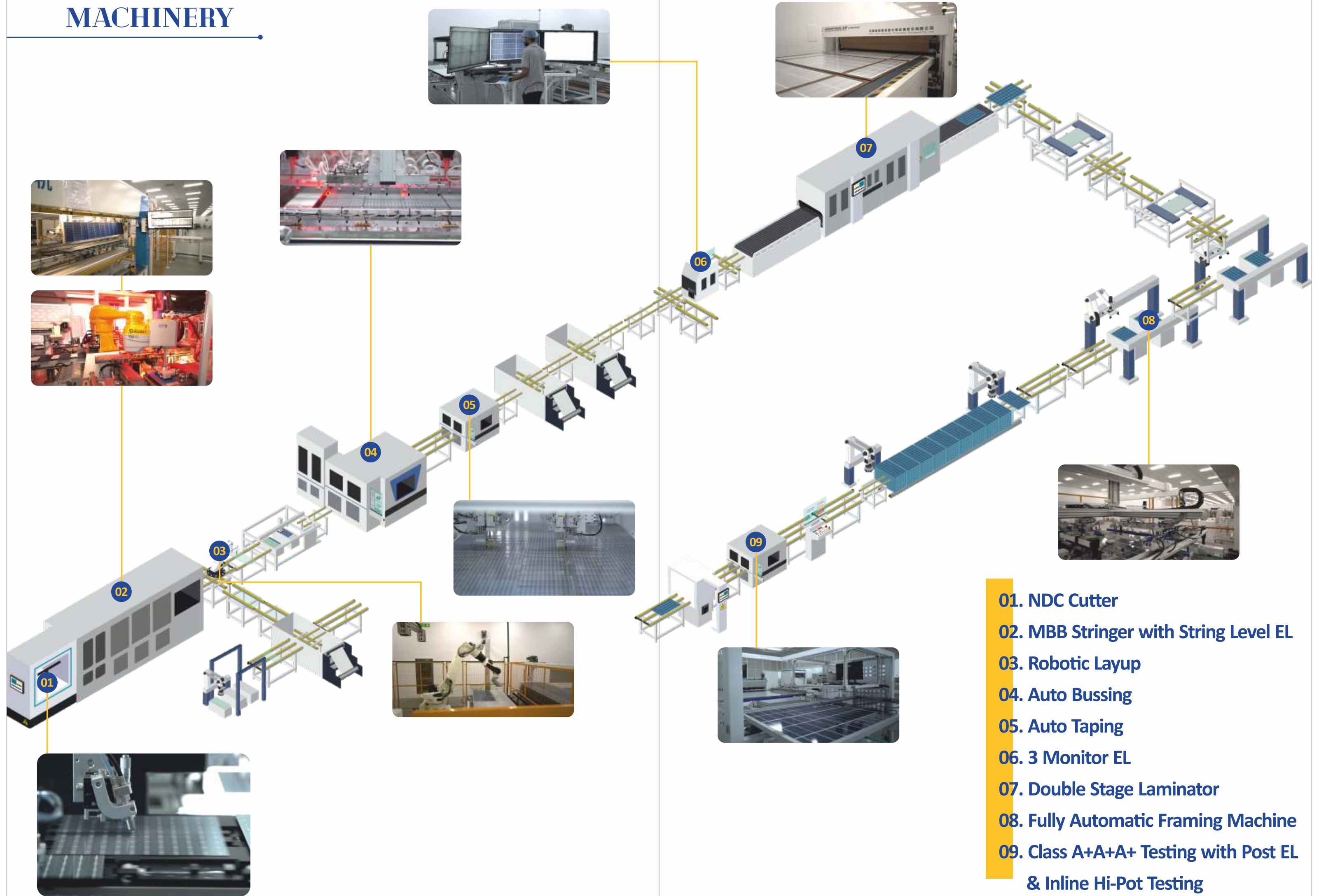
### High Efficiency Half Cut Poly Modules

Model Size : 1986 x 1001 x 35 mm  
Efficiency : > 17.10%  
Design Configuration : Glass to Back sheet with Frame  
Cell Type : 158.75 mm - 5 BB Monofacial - 144 Cut Cells



340+WP

# MACHINERY



- 01. NDC Cutter
- 02. MBB Stringer with String Level EL
- 03. Robotic Layup
- 04. Auto Bussing
- 05. Auto Taping
- 06. 3 Monitor EL
- 07. Double Stage Laminator
- 08. Fully Automatic Framing Machine
- 09. Class A+A+A+ Testing with Post EL & Inline Hi-Pot Testing